

▼  
Creative Passion

**Koino**<sup>®</sup>

[www.koino.com](http://www.koino.com)

# KH-50XX Series



## CLASSIFICATION

**KH - 5030L - 24PCK**

①

②

① MODEL	20L	20 x 20 mm
	30L	30 x 30 mm
	40L	40 x 40 mm
② INPUT VOLTAGE	12	12VDC
	24	24VDC
	12PCK	12VDC positive check input
	24PCK	24VDC positive check input
	DC110PCK	110VDC positive check input
	12NCK	12VDC negative check input
	24NCK	24VDC negative check input
	DC110NCK	110VDC negative check input
	12T	110VAC AC-DC converter
22T	220VAC AC-DC converter	



**Technical Information**

		KH-5020L	KH-5030L	KH-5040L
Panel unit size		20X20	30X30	30X40
Light Source		LED		
Current consumption		Max. 20mA		
Rated Voltage	Full Voltage	12V DC		
		24V DC		
Rated Voltage	Converter type	-	110 V AC	
		-	220 V AC	
Color		R,G,Y,O	R,G,Y,O,B,W	
Insulation resistance		100MΩ(DC500V)		
Dielectric Strength		AC 1,500v(50/60Hz)		
Ambient Temp.		-10~+55°C		
Material		Enclosure: PC, Color plate: Acryl, Reflector: Noryl		
Terminal		M2.5X7	M3.5X7	
Max. Combination	Column	13	20	20
	Row	13	20	20

**Wiring**

TYPE	MODEL	R	S	L1	L2	T(attachment)
A	KH-5020L-12, 24	20	20	L: 40		-
B	KH-5030L-12, 24	30	30	56	63	-
	KH-5030L-12, 24	40	30			
C	KH-5030L-12PCK, 24PCK	30	30	107	111	KC-PCK
	KH-5030L-12PCK, 24PCK	40	30			
	KH-5030L-12NCK, 24NCK	30	30			KC-NCK
	KH-5030L-12NCK, 24NCK	40	30			
D	KH-5030L-12T, 24T	30	30	105	111	KC12T, 22T
	KH-5030L-12T, 24T	40	30			

CONTROL COMPONENTS

SQUARE LIGHT

TOWER LIGHT

MICRO SWITCH

FOOT SWITCH

LIMIT SWITCH

POWER SWITCH

HOIST SWITCH

CAM SWITCH

BUZZER

PHOTO SENSOR

PROXIMITY SENSOR

FLOATLESS LEVEL SWITCH

TIMER & COUNTER

RELAY

SOCKETS

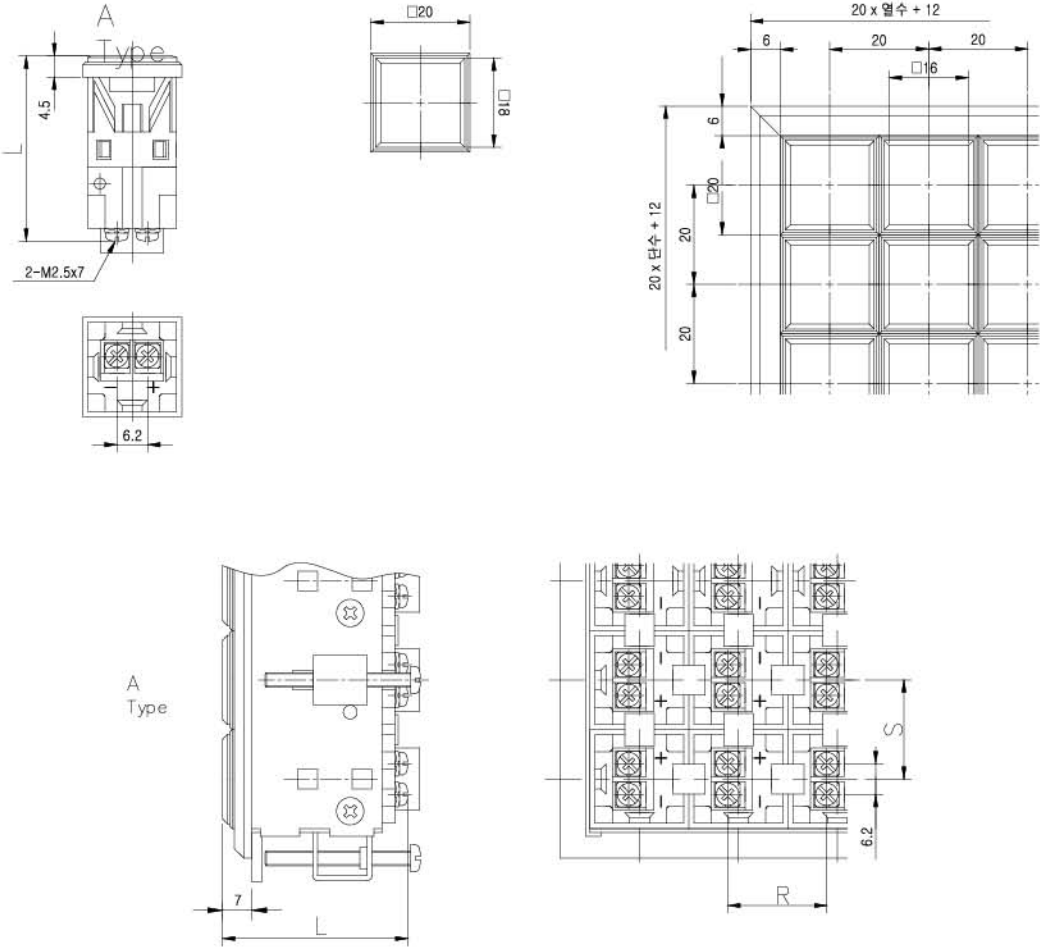
TERMINAL BLOCK

CONTROL BOX

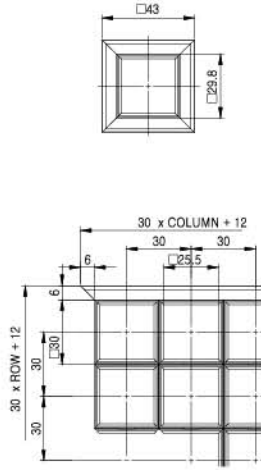
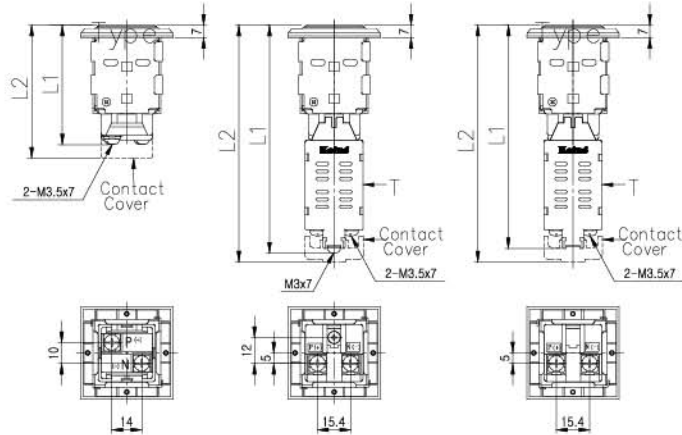
PID TEMP. CONTROLLER



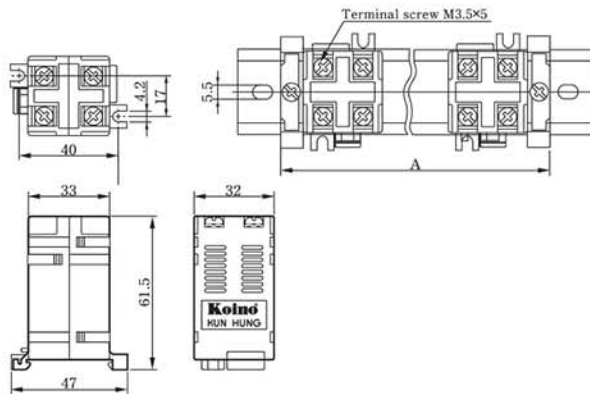
Dimensions



PANEL MOUNT ANNUNCIATORS



KC-12, 22



CONTROL COMPONENTS

SQUARE LIGHT

TOWER LIGHT

MICRO SWITCH

FOOT SWITCH

LIMIT SWITCH

POWER SWITCH

HOIST SWITCH

CAM SWITCH

BUZZER

PHOTO SENSOR

PROXIMITY SENSOR

FLOATLESS LEVEL SWITCH

TIMER & COUNTER

RELAY

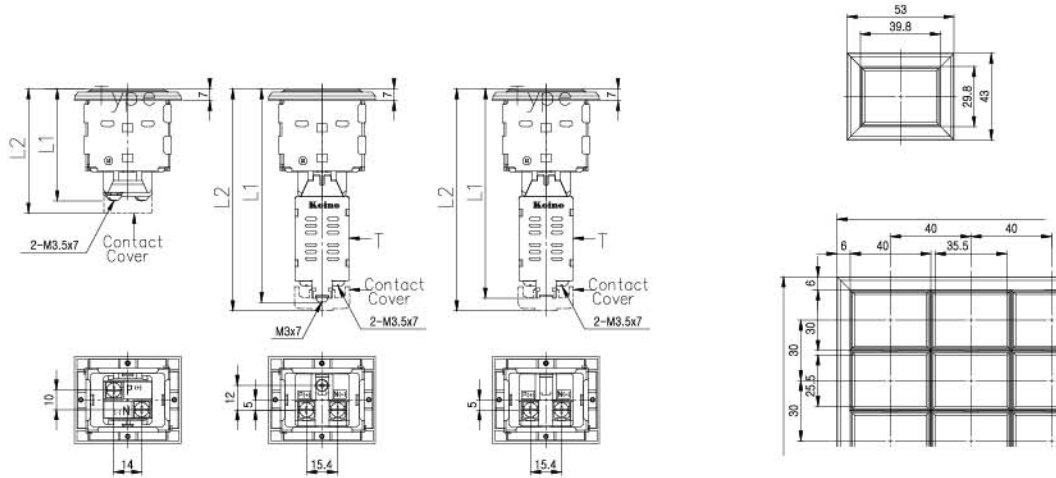
SOCKETS

TERMINAL BLOCK

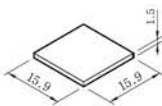
CONTROL BOX

PID TEMP. CONTROLLER

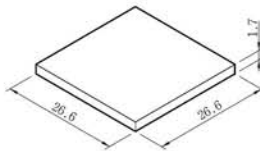
PANEL MOUNT ANNUNCIATORS



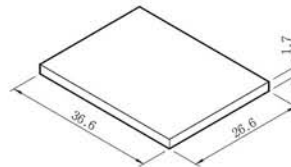
**Windows**



KH-5020L



KH-5030L

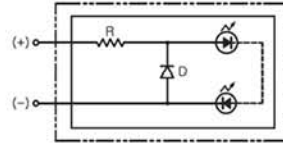


KH-5040L

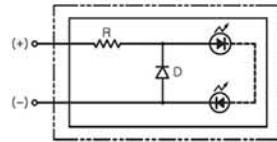


**Accessories**

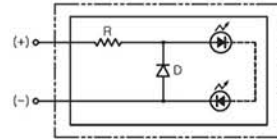
LED unit for KH-5020L



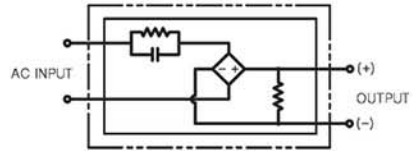
LED unit for KH-5030L



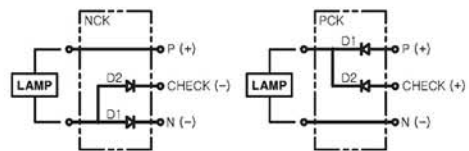
LED unit for KH-5040L



AC/DC Converter



Check terminal unit



Jumpers



Lamp remover



Bracket



CONTROL COMPONENTS

SQUARE LIGHT

TOWER LIGHT

MICRO SWITCH

FOOT SWITCH

LIMIT SWITCH

POWER SWITCH

HOIST SWITCH

CAM SWITCH

BUZZER

PHOTO SENSOR

PROXIMITY SENSOR

FLOATLESS LEVEL SWITCH

TIMER & COUNTER

RELAY

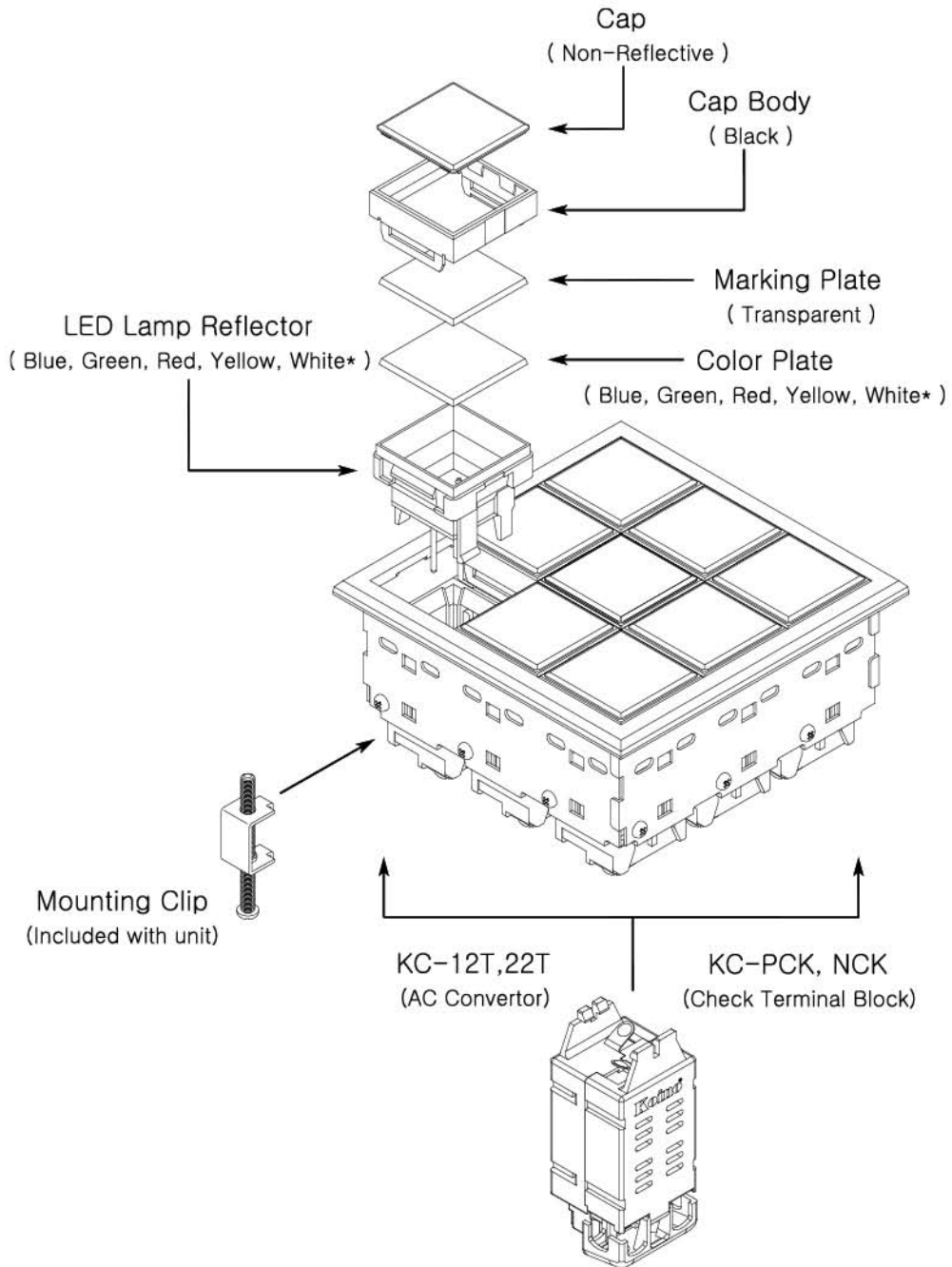
SOCKETS

TERMINAL BLOCK

CONTROL BOX

PID TEMP. CONTROLLER

**Installing**



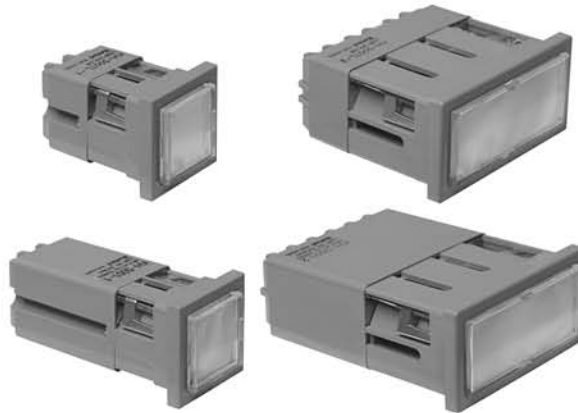


▼  
Creative Passion

**Koino**<sup>®</sup>


[www.koino.com](http://www.koino.com)

# KH-500X Series



## CLASSIFICATION

KH - 500  $\frac{1}{①}$  -  $\frac{1}{②}$   $\frac{L}{③}$

① RATED VOLTAGE	TL	Without Transformer	
	1	110VAC	
	2	220VAC	
② NUMBER OF LAMPS	1	1	
	2	2	
	3	3	
③ LAMP TYPE	NONE	Filament	
	L	LED	

**Technical Information**

Input Voltage	KH-500TL-1,1L KH-500TL-2,2L KH-500TL-3,3L	KH-5001-1,1L KH-5001-2,2L KH-5001-3,3L	KH-5002-1,1L KH-5002-2,2L KH-5002-3,3L
Input Voltage	DC 12V/24V/110V	110VAC	220VAC
Filament Lamp	12/24VDC: 2W	18V 2W	18V 2W
LED Lamp	12/24VDC: 20mA Max.	18V : 20mA Max.	18V : 20mA Max.
Insulation Resistance	100MΩ min.(DC500V)		
Dielectric Strength	1,500 VAC(50/60Hz) for 1 minute		
Vibration Resistance	10~55 Hz double amplitude 0.5mm at X, Y Z directions		
Shock Resistance	10G		
Protection	IP50		
Ambient Temperature	-10~+55°C		
Ambient Humidity	45~85% RH		

**Quick Selection Guide**

Input Voltage	Size	No. of bulbs	Lamp	Model
DC 12V/24V/110V	34X34	1	Filament Lamp	KH-500TL-1
			LED Lamp	KH-500TL-1L
	34X74	2	Filament Lamp	KH-500TL-2
			LED Lamp	KH-500TL-2L
		3	Filament Lamp	KH-500TL-3
			LED Lamp	KH-500TL-3L
AC 110V	34X34	1	Filament Lamp	KH-5001-1
			LED Lamp	KH-5001-1L
	34X74	2	Filament Lamp	KH-5001-2
			LED Lamp	KH-5001-2L
		3	Filament Lamp	KH-5001-3
			LED Lamp	KH-5001-3L
AC 220V	34X34	1	Filament Lamp	KH-5002-1
			LED Lamp	KH-5002-1L
	34X74	2	Filament Lamp	KH-5002-2
			LED Lamp	KH-5002-2L
		3	Filament Lamp	KH-5002-3
			LED Lamp	KH-5002-3L

CONTROL COMPONENTS

SQUARE LIGHT

TOWER LIGHT

MICRO SWITCH

FOOT SWITCH

LIMIT SWITCH

POWER SWITCH

HOIST SWITCH

CAM SWITCH

BUZZER

PHOTO SENSOR

PROXIMITY SENSOR

FLOATLESS LEVEL SWITCH

TIMER & COUNTER

RELAY

SOCKETS

TERMINAL BLOCK

CONTROL BOX

PID TEMP. CONTROLLER

Specification



KH-500TL-1, 1L



KH-500TL-2, 2L

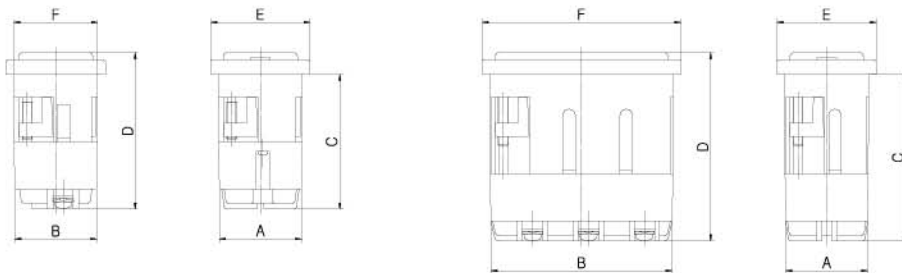


KH-500TL-3, 3L

Ratings

	Input Voltage	Filament Lamp		LED Lamp		Color	Material	Weight
		Voltage	Power Consumption	Voltage	Power Consumption			
KH-500TL-1,1L	12V/24V	12V/24V	2.0W Max.	12V/24V	20mA Max.	Red Green Yellow White	Body: ABS Lettering Plate: AS Color Plate: Acryl Lamp Cap: AS	63g
	DC 110V	48V	1.0W Max.	-	-			63g
KH-500TL-2,2L	12V/24V	12V/24V	2.0W Max.	12V/24V	20mA Max.			122g
	DC 110V	48V	1.0W Max.	-	-			122g
KH-500TL-3,3L	12V/24V	12V/24V	2.0W Max.	12V/24V	20mA Max.			134g
	DC 110V	48V	1.0W Max.	-	-			134g

Dimensions



	A	B	C	D	E	F
KH-500TL-1,1L	34	34	54	63	40	40
KH-500TL-2,2L	34	74	66.5	76	40	80
KH-500TL-3,3L	34	74	66.5	67	40	80

Specification



KH-5001-1, 1L  
KH-5002-1, 1L



KH-5001-2, 2L  
KH-5002-2, 2L

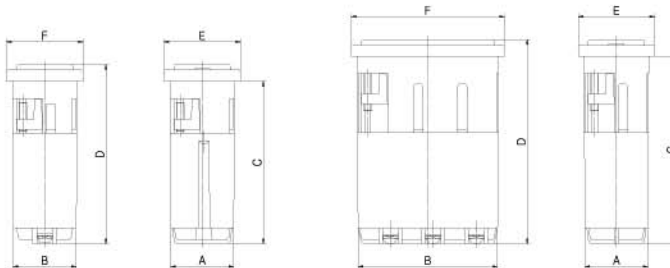


KH-5001-3, 3L  
KH-5002-3, 3L

Ratings

	Input Voltage	Filament Lamp		LED Lamp		Color	Material	Weight
		Voltage	Power Consumption	Voltage	Power Consumption			
KH-5001-1,1L	110VAC	18V	2.0W Max.	18V	20mA Max.	Red Green Yellow White	Body: ABS Lettering Plate: AS Color Plate: Acryl Lamp Cap: AS	147g
KH-5001-2,2L	110VAC	18V	2.0W Max.	18V	20mA Max.			297g
KH-5001-3,3L	110VAC	18V	2.0W Max.	18V	20mA Max.			389g
KH-5002-1,1L	220VAC	18V	2.0W Max.	18V	20mA Max.			147g
KH-5002-2,2L	220VAC	18V	2.0W Max.	18V	20mA Max.			297g
KH-5002-3,3L	220VAC	18V	2.0W Max.	18V	20mA Max.			389g

Dimensions



	A	B	C	D	E	F
KH-5001-1,1L, KH-5002-1,1L	34	34	85	94	40	40
KH-5001-2,2L, KH-5002-2,2L	34	74	98	107	40	80
KH-5001-3,3L, KH-5002-3,3L	34	74	98	107	40	80

CONTROL COMPONENTS

SQUARE LIGHT

TOWER LIGHT

MICRO SWITCH

FOOT SWITCH

LIMIT SWITCH

POWER SWITCH

HOIST SWITCH

CAM SWITCH

BUZZER

PHOTO SENSOR

PROXIMITY SENSOR

FLOATLESS LEVEL SWITCH

TIMER & COUNTER

RELAY

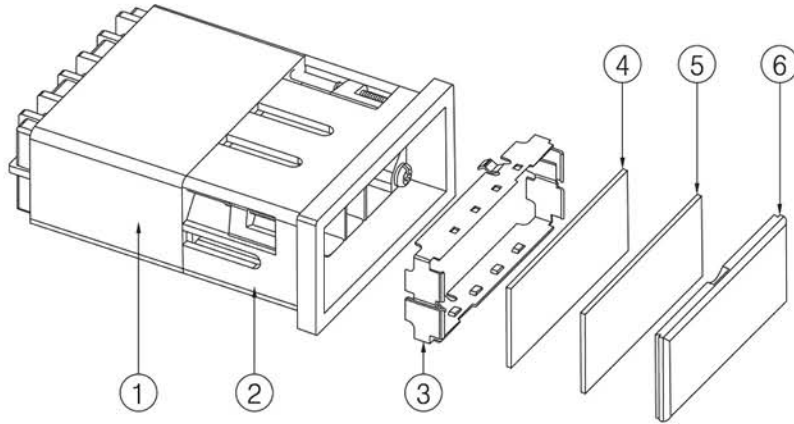
SOCKETS

TERMINAL BLOCK

CONTROL BOX

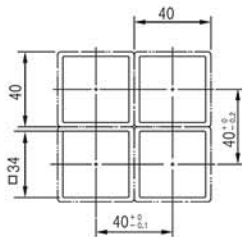
PID TEMP. CONTROLLER

Material

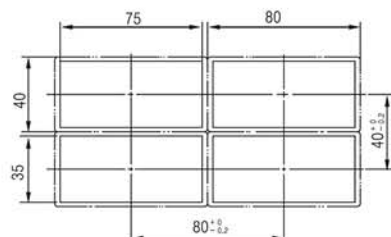


	Name	Material	Color		Name	Material	Color	Item	Dimension
①	Transformer housing	ABS( heat-resisting)	Grey	④	Label plate	AS	Translucent	KH-5001, 2-1, 1L	28 X 28
								KH-5001, 2-2, 2L	68 X 28
								KH-5001, 2-3, 3L	68 X 28
②	Lamp housing	ABS( heat-resisting)	Grey	⑤	Color plate	Acryl	R, G, Y, W	KH-5001, 2-1, 1L	28 X 28
								KH-5001, 2-2, 2L	68 X 28
								KH-5001, 2-3, 3L	68 X 28
③	Lighting panel holder	Stainless steel		⑥	Lamp cover	AS	Clear	KH-5001, 2-1, 1L	28 X 28
								KH-5001, 2-2, 2L	68 X 28
								KH-5001, 2-3, 3L	68 X 28

Panel-cut Dimension

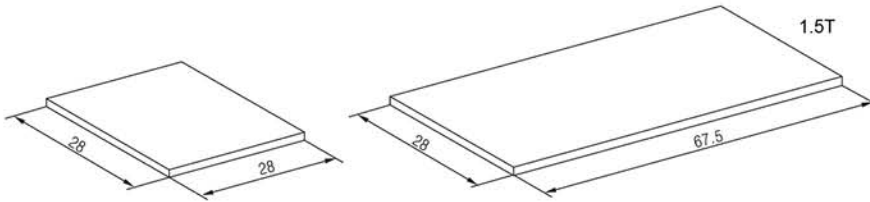


KH-500TL-1, 1L, KH-5001, 2-1, 1L



KH-500TL-2, 2L, KH-5001, 2-2L, 3L, KH-5001, 2-3L, 3L

**Label-plate Dimension**



KH-500TL-1, 1L, KH-5001, 2-1, 1L

KH-500TL-2, 2L, KH-5001, 2-2L, 3, 3L

**Misc.**



Linker



Lamp puller

CONTROL COMPONENTS

**SQUARE LIGHT**

TOWER LIGHT

MICRO SWITCH

FOOT SWITCH

LIMIT SWITCH

POWER SWITCH

HOIST SWITCH

CAM SWITCH

BUZZER

PHOTO SENSOR

PROXIMITY SENSOR

FLOATLESS LEVEL SWITCH

TIMER & COUNTER

RELAY

SOCKETS

TERMINAL BLOCK

CONTROL BOX

PID TEMP. CONTROLLER

▼  
Creative Passion

**Koino**<sup>®</sup>

[www.koino.com](http://www.koino.com)