

ELECTRO-MATIC VISUAL



LED Signs
& Lighting



Electro-Matic Campus
Farmington Hills, Michigan
6mm • 180 x 480 pixels • 4 x 10 ft

LED SIGNS LIKE THIS

BUILT
HERE.

ELECTRO-MATIC VISUAL



Electro-Matic Visual has been a leader in developing LED lighting and display products for many years. From early electronic sign boards to the amazing full color high-resolution displays of today, we've brought industry innovation along every step of the way. The LED revolution hasn't stopped there, as EM Visual provides complete turnkey LED lighting solutions to help reduce your carbon footprint and lower energy costs.

Experience and Dependability

Our company, founded in 1969, has been providing high technology, quality, electrical and electronics based products for over 50+ years.

Manufactured in the USA

We are proud that our manufacturing, customer service, and engineering headquarters are located in Farmington Hills, Michigan.

Quality

ISO 9001 certified since 1998. We conduct our operations to strict international standards based on Continuous Improvement, undergoing audits by independent agencies twice a year.



04 Outdoor LED Signs

26 Industrial LED Signs

18 Digital LED Billboards

32 LED Lighting

20 Indoor LED Signs



Proudly Turning Innovation into Value Since 1969





Meadows Crossing apartments

Matty's Bar & Grill

LIQUOR

Cottage Inn Community Pizza

Barber Salon

LEASING 616.892.2700

insomnia cookies

Smile...be kind...
BE FRIENDLY

Meadows Crossing

10745

Meadows Crossing Apartments
 Allendale, Michigan
 6mm • 180 x 360 pixels • 4 x 8 ft

Build Awareness with Outdoor LED Signs

The Fusion® brings you brilliant vivid colors, graphics, logos - even animations and live video - all in an extremely versatile platform that's scalable to virtually any size and proportion with the industry's widest range of resolutions. The Fusion® was designed for maximizing the exposure for your business. Whether it's a school, church, bank, restaurant, or auto center, the Fusion® compliments and strives in these types of applications.

Proven Results

According to the Small Business Association, implementing an LED sign can increase business from 15% to 150%. With extreme durability, the Fusion® can provide its proven results for years to come with minimal maintenance and service.

Stunning Visuals and Versatile Software Options

With billions of color possibilities, our full color LED signs allow you to display eye-capturing, attention-grabbing images, animations and movie clips that people will remember as they pass by your business. Use the brilliant colors of the Fusion® display with our Visions software or use any cloud or web-based software, to communicate your greatest images, animations and videos.

“When Glenn came to me with a request for a replacement multi-tenant sign that would be a cut above the rest, I knew the recently released 6mm Electro-Matic display was the perfect fit.”

Nate Zevenbergen
Universal Sign Systems









Boyne Falls Public School
Boyne Falls, Michigan
16mm • 60 x 120 pixels • 3 x 6 ft

Turnkey Made Easy

Simplify your LED signage projects with a complete signage solution: the FusionPLUS™ Series from Electro-Matic Visual. Our versatile extrusion cabinet can provide an all-signage-in-one solution for an LED display and an LED-lit acrylic, polycarbonate, or vacuum-formed sign panel of your design.

Features and Benefits

- ✓ Customizable sign panel
- ✓ Multiple configurations
- ✓ Lightweight aluminum cabinet
- ✓ Universal mounting system
- ✓ All the benefits of Fusion series
- ✓ 5-Year warranty
- ✓ Speed up time for manufacturing companies



Above



Side



Below



Kentucky Fried Chicken
Roseville, Michigan
11mm • 126 x 216 pixels • 5 x 8 ft

Corporate Accounts

Electro-Matic provides LED displays to numerous national brands in several major industries including, but not limited to, automotive, professional services, and restaurants. Our user-friendly, vibrant, dependable LED signs for franchises are the reason so many national brands have chosen our company.





Customer Support Portal



Electro-Matic’s customer support portal is a one-stop hub for everything concerning your new LED Sign right at your fingertips. Every new Electro-Matic LED sign owner gains access to a customized hub that offers these benefits:

Key Benefits

- ✓ Detailed LED sign specifications
- ✓ Software downloads
- ✓ Creative content libraries
- ✓ Order custom creative content
- ✓ Expedited support access
- ✓ Training videos
- ✓ Warranty information



Creative Services

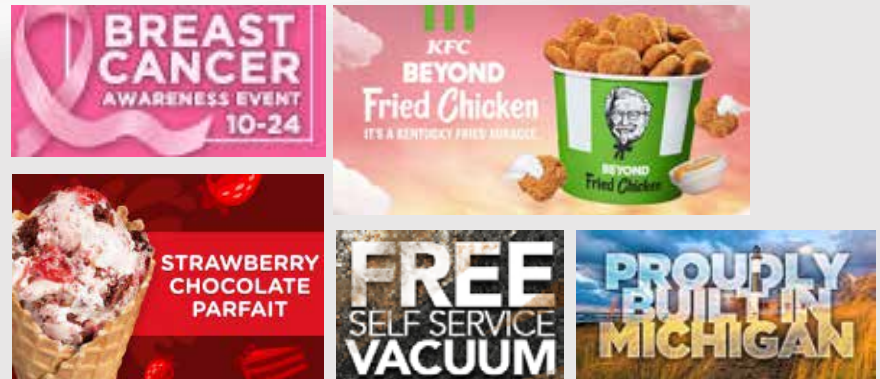
Whether you’re a small business owner or manage a network of LED displays we know your time is important. That’s why Electro-Matic Visual strives to help make it as easy as possible to maximize your LED display’s advertising potential with attention-grabbing content.

Creative Library

Each new Electro-Matic LED display comes with free access to a creative library featuring thousands of pre-made stills and animations catered to your LED display. Our creative library covers a wide variety of content categories, such as holidays, retail, school, social media, sports, religious, blank backgrounds, and many more.

Custom Content

Electro-Matic also has a staff of dedicated content creators when the need arises for customized content. A variety of options are available, including a one-time single file still or animation, all the way up to regularly scheduled monthly creative packages featuring dozens of different stills and animations.



Creative Services Account Portal

With our Creative Services Portal, you can add the latest content to your Electro-Matic LED display available in animated and still versions in six different sizes to best fit your LED Sign.



Picture Perfect Full Color LED Signs

Bringing Pixel Resolution into Focus

The staple of any LED display manufacturer is its line of Full Color LED Signs, and Electro-Matic Visual has you covered. With billions of color possibilities, these LED signs allow you to display eye-capturing and attention-grabbing images, animations, and movie clips that people will remember as they pass by your business. Our full color LED displays have three different pixel pitch offerings each giving a distinct level of image sharpness and detail that are optimized for foot traffic to pylon displays over 30ft. in the air.

For details, please visit visual.electro-matic.com or contact your Sales Representative at **866-998-0990**.



Example Shown: 240 x 480 Pixels / 4ft. x 8ft. Cabinet



Example Shown: 144 x 288 Pixels / 4ft. x 8ft. Cabinet



Example Shown: 108x216 Pixels / 4ft. x 8ft. Cabinet



EM6

EM10

EM14

6.25mm
40 x 80
3200
15ft
^ 177.78% MORE THAN 10MM
^ 393.83% MORE THAN 14MM

10.4MM
24 X 48
1152
25ft
^ 77.78% MORE THAN 14MM

13.89MM
18 X 36
648
35ft

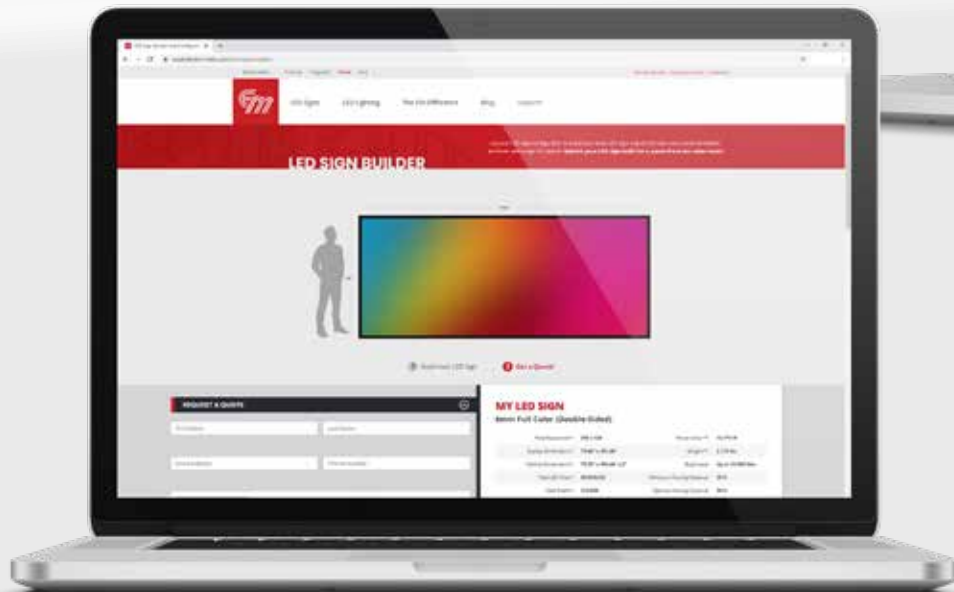
PIXEL PITCH
TILE RESOLUTION (H X W)
TOTAL PIXELS
MIN. VIEWING DISTANCE
% MORE PIXELS

Build Your Ideal LED Sign Today!

If you're in the market for a new LED Sign and want to experiment with sizes, resolution, and colors — our LED Sign Builder is for you! Build your custom LED sign and send us what you've built for a pricing quote from our helpful sales team!

Key Benefits

- ✓ Easy to use
- ✓ Allows account holder to securely control any digital display
- ✓ Works with any internet-enabled computer, tablet, or phone
- ✓ Accessible from anywhere at any time
- ✓ Manage one or thousands of digital displays



GET STARTED AT
ledsignbuilder.com





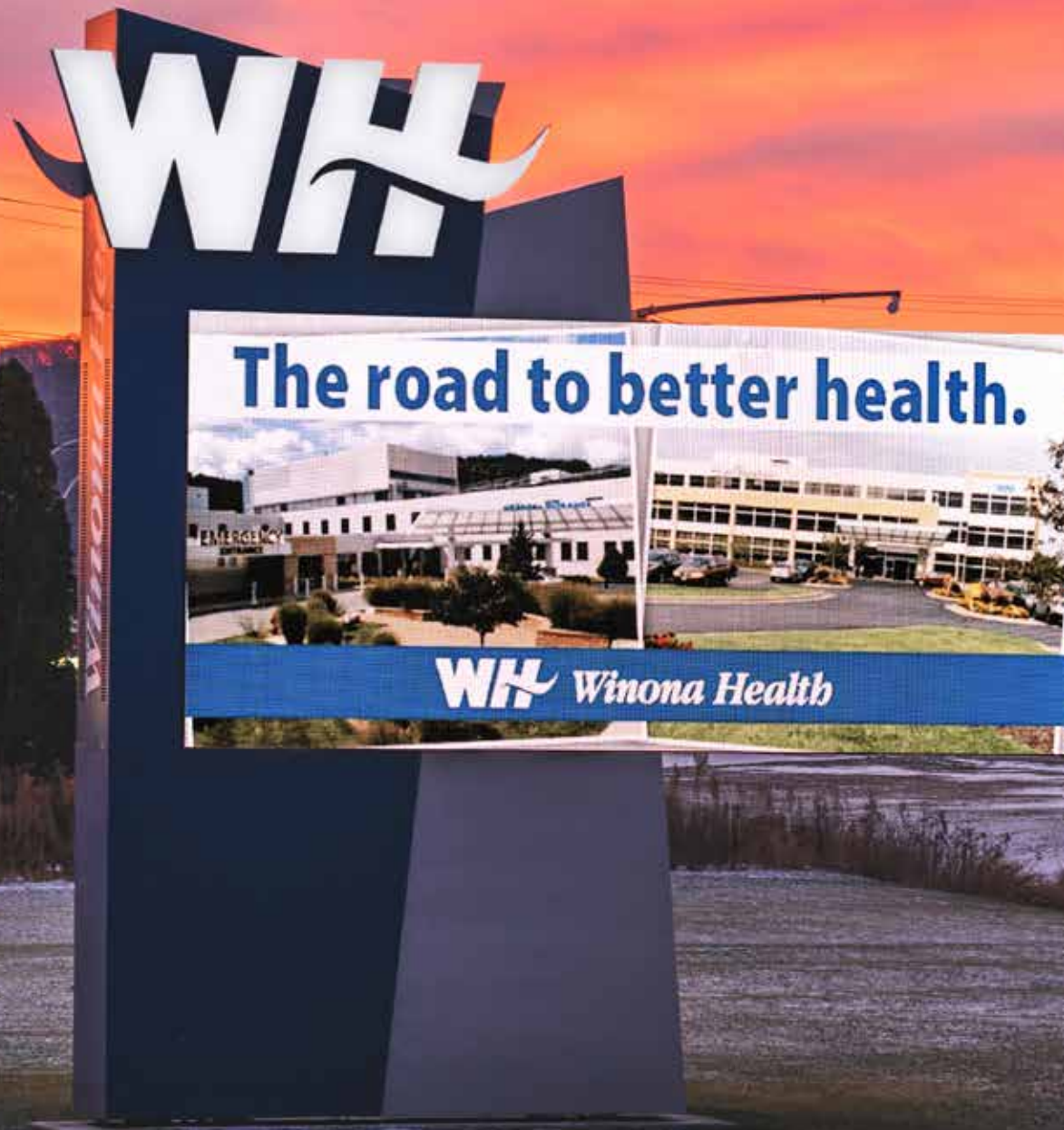
SMD SERIES Sizing Chart

FRONT VENTING FRAME THICKNESS = 4.82"

LED PIXEL MATRIX HEIGHT ↑	360	216	162	SIGN HEIGHT (INCLUDES CABINET) ↑	93.5"	14.78 ft² 93.5" x 22.77"	27.57 ft² 93.5" x 44.19"	40.35 ft² 93.5" x 62.14"	53.13 ft² 93.5" x 81.83"	65.91 ft² 93.5" x 101.51"	78.70 ft² 93.5" x 121.2"	91.47 ft² 93.5" x 140.88"	104.26 ft² 93.5" x 160.57"	117.04 ft² 93.5" x 180.25"	SIDE FRAME THICKNESS = 3"
	320	192	144		83.66"	13.23 ft² 83.66" x 22.77"	24.67 ft² 83.66" x 42.46"	36.10 ft² 83.66" x 62.14"	47.54 ft² 83.66" x 81.83"	59.97 ft² 83.66" x 101.51"	70.41 ft² 83.66" x 121.2"	81.85 ft² 83.66" x 140.88"	93.29 ft² 83.66" x 160.57"	104.72 ft² 83.66" x 180.25"	
	280	168	126		73.81"	11.67 ft² 73.81" x 22.77"	21.76 ft² 73.81" x 42.46"	31.85 ft² 73.81" x 62.14"	41.94 ft² 73.81" x 81.83"	52.03 ft² 73.81" x 101.51"	62.12 ft² 73.81" x 121.2"	72.21 ft² 73.81" x 140.88"	82.30 ft² 73.81" x 160.57"	92.39 ft² 73.81" x 180.25"	
	240	144	108		63.97"	10.12 ft² 63.97" x 22.77"	18.86 ft² 63.97" x 42.46"	27.60 ft² 63.97" x 62.14"	36.35 ft² 63.97" x 81.83"	45.09 ft² 63.97" x 101.51"	53.84 ft² 63.97" x 121.2"	62.58 ft² 63.97" x 140.88"	71.33 ft² 63.97" x 160.57"	80.07 ft² 63.97" x 180.25"	
	200	120	90		54.13"	8.56 ft² 54.13" x 22.77"	15.96 ft² 54.13" x 42.46"	23.36 ft² 54.13" x 62.14"	30.76 ft² 54.13" x 81.83"	38.16 ft² 54.13" x 101.51"	45.56 ft² 54.13" x 121.2"	52.96 ft² 54.13" x 140.88"	60.36 ft² 54.13" x 160.57"	67.76 ft² 54.13" x 180.25"	
	160	96	72		44.29"	7 ft² 44.29" x 22.77"	13.06 ft² 44.29" x 42.46"	19.11 ft² 44.29" x 62.14"	25.17 ft² 44.29" x 81.83"	31.22 ft² 44.29" x 101.51"	37.28 ft² 44.29" x 121.2"	43.33 ft² 44.29" x 140.88"	49.39 ft² 44.29" x 160.57"	55.44 ft² 44.29" x 180.25"	
	120	72	54		34.44"	5.45 ft² 34.44" x 22.77"	10.16 ft² 34.44" x 42.46"	14.86 ft² 34.44" x 62.14"	19.57 ft² 34.44" x 81.83"	24.28 ft² 34.44" x 101.51"	28.99 ft² 34.44" x 121.2"	33.69 ft² 34.44" x 140.88"	38.40 ft² 34.44" x 160.57"	43.11 ft² 34.44" x 180.25"	
	80	48	36		24.6"	×	7.25 ft² 24.6" x 42.46"	10.62 ft² 24.6" x 62.14"	13.98 ft² 24.6" x 81.83"	17.34 ft² 24.6" x 101.51"	20.71 ft² 24.6" x 121.2"	24.07 ft² 24.6" x 140.88"	27.43 ft² 24.6" x 160.57"	30.79 ft² 24.6" x 180.25"	
	40	24	18		14.76"	×	×	6.37 ft² 14.76" x 62.14"	8.39 ft² 14.76" x 81.83"	10.40 ft² 14.76" x 101.51"	12.42 ft² 14.76" x 121.2"	14.44 ft² 14.76" x 140.88"	16.46 ft² 14.76" x 160.57"	18.48 ft² 14.76" x 180.25"	
							22.77"	42.46"	62.14"	81.83"	101.51"	121.2"	140.88"	160.57"	
						→ DISPLAY WIDTH (INCLUDES CABINET) →									
					14 mm	36	72	108	144	180	216	252	288	324	
					10 mm	48	96	144	192	240	288	336	384	432	
					6.25 mm	80	160	240	320	400	480	560	640	720	
						→ LED PIXEL MATRIX WIDTH →									

Cabinet Dimension → **73.81"** **41.94 ft²** ← Total Display Physical ft² (includes Cabinet)
73.81" x 81.83" ← Total Display Physical Dimensions (includes Cabinet)

3.9mm Sizes Available Upon Request
 For additional sizes, please contact your Electro-Matic Visual Sales Representative for information





Toledo Area Humane Society

SEPTEMBER 7



ToledoHumane.org

TDO ADVERTISING

TDO Advertising
Toledo, Ohio
16mm • 260 x 880 pixels • 14 x 48 ft

See the Big Picture with a Digital Billboard

Reliable and feature-rich, an LED billboard from Electro-Matic Visual helps maximize out-of-home advertising revenue and optimize your ROI.

Key Features

- ✓ 8,000 NITs
- ✓ 2,658 lbs @ 14 x 48ft.
- ✓ 14,000 watts @ 16mm 14x48ft
- ✓ Built-in Backup Power Supply and PC
- ✓ Siemens Remote Relay Control System
- ✓ Cloud-based Software Ready (1st & 3rd Party)
- ✓ 5-year parts and Labor warranty
- ✓ Delivered in 6 Sections at 14 x 48 ft., 2-Section Option Available

Additional Features

- ✓ Secure enclosed cabinet design
- ✓ Hook mounting
- ✓ Quick data & power connections
- ✓ Full data backup signals to the display
- ✓ Power monitoring
- ✓ Remote diagnostics/management
- ✓ Single tile connection
- ✓ Large 15x15" tile format

“Today, I won’t use anything but an Electro-Matic Digital Billboard. We look forward to continuing our partnership with them.”

Lafe Schneider
General Manager // TDO Advertising



8,000 NIT BRIGHTNESS	2,658 LBS. @ 14 X 48 FT.	BACKUP PC BUILT IN	CLOUD SOFTWARE	6-SECTION 14 X 48 FT.	SIEMENS REMOTE RELAY SYSTEM
----------------------	--------------------------	--------------------	----------------	-----------------------	-----------------------------



Birthing

After the birth of our baby, we realized what a blessing it was for my husband and I to attend birthing and lactation classes at KCH. We felt genuine care and support from the staff beginning with the prenatal classes and ending with the delivery of our son.

The classes prepared us in so many ways and answered our questions which calmed our fears. Every one of our questions was answered. Most importantly, the staff always had our baby's best interest in mind. We learned more than we ever expected and feel better equipped to move into parenthood with many new tools.



Knox Community Hospital
Mount Vernon, Ohio
1.9mm • 1152 x 3072 pixels • 7 x 20 ft

Show-Stopping High Definition LED Signs

High resolution LED Video Walls deliver superior performance, quality, brightness, worry-free maintenance, and longevity for any business or organization. The Fusion Pro® provides an incredible picture or video for meeting rooms, lobbies, conventions, entertainment venues, churches, and marquee retail spaces.

Benefits

- ✓ LED Video Walls are much brighter than projectors and are visible even in daylight, from any angle.
- ✓ An LED Video Wall features a slim form factor and can be mounted flush to a wall.
- ✓ The crisp, bright and clear images last for 100,000 hours without loss of brightness or image quality.
- ✓ LED Video Walls have the lowest energy consumption levels of all types of displays.
- ✓ LED Video Walls deliver superior performance via a video controller built into each display that can easily manage multiple streams of content.

Key Features

- ✓ Pixel pitch offerings as low as 0.9mm
- ✓ High Speed Transmissions
- ✓ 8K, 4K, UHD, FHD & Customization
- ✓ Wireless Mirror & Remote Control
- ✓ Wired or wireless communication



THE MOST POWERFUL DIGITAL SIGNAGE SOFTWARE

VUE software by Electro-Matic is an online cloud-based software program compatible with all operating systems for anything including electronic message centers, to LED video walls, televisions, menu boards, digital billboards, and more. This new software contains countless features that are all extremely user-friendly.



Key Benefits

- ✓ Update the content on screens in real time
- ✓ Create playlists and schedules
- ✓ Works with any screen
- ✓ See if a screen is online or offline
- ✓ View what screen is playing
- ✓ Media Service Library
- ✓ Send images, ads, menus, websites and more from your devices to your screens

Software Options

- ✓ Blip
- ✓ BrightSign
- ✓ EM Visions Play
- ✓ Flex Center
- ✓ Mager
- ✓ Novastar
- ✓ Pro Presenter
- ✓ Scorevision
- ✓ SmarterSign
- ✓ Renewed Vision



ProPresenter



Digital Full Matrix LED Scoreboard Software Options

Electro-Matic offers solutions to provide you with the ultimate software to take your gameday to the next level.

Renewed Vision Software

Key Benefits

- ✓ Presentation Manager
- ✓ Dynamic features including showing ads as well as live footage of the games

Can be Controlled by:

- ✓ Tablet
- ✓ Also compatible with different controller formats
- ✓ Used for a larger variety of sports

PC Scoreboards Software

Standard customized scoring platform used for

- ✓ Basketball
- ✓ Lacrosse
- ✓ Volleyball
- ✓ Football
- ✓ Hockey
- ✓ Baseball/Softball









ERR:1000 GRR:1000 A:850 T:12:00
001 002 003 004 005 006 007 008 009 010
FLT STV TIP AUT LDR LSC TIP CLN HLD STV
011 012 013 014 015 016 017 018 019 020
HLD AUT STV REJ ILK HPR PTW TIP CLN HLD
MARQUEE LINE ONE
MARQUEE LINE TWO





Industrial LED Signs and Andon Board Systems

Lean manufacturing and visual factory management represent the next generation of manufacturing. These systems rely on real-time information and feedback regarding the status of the plant to achieve success. Electro-Matic Visual's **FactoryVision™** product line of industrial LED displays and Andon systems serves all of your visual management needs with proven systems across a diverse mix of major industries including: automotive, aerospace, material handling, and food and beverage.

Built to Work. Built to Last.

With over 50 years of experience in serving manufacturing industries, Electro-Matic Visual has designed a complete line of LED Andon displays including marquees and process control boards. These displays have been designed and tested to withstand the precision and serviceability required within the industrial process. Electro-Matic Visual offers complete standalone Andon systems both as a turnkey solution, or as individual components on an as-needed basis.



Standalone Andon Systems

Electro-Matic Visual has extensive experience in developing completely custom standalone Andon systems for virtually any industrial application. All of our custom Andon systems are tested to withstand the precision, scalability, and serviceability required within the industrial process.

Electro-Matic Visual's custom Andon systems can also be integrated seamlessly into an Industry 4.0 setting. The Industrial Internet of Things (IIoT) is revolutionizing manufacturing by connecting assets throughout the industrial value chain providing complete operational visibility to allow for real-time decision making and improved levels of quality and efficiency as well as new service opportunities.

Mass Communication Systems

Electro-Matic Visual also offers a centralized system that can control an unlimited number of 4U2SEE LED displays via a RS485 connection with pre-programmed message alerts over a simple dry contact system. Multiple alerts or messages are triggered by the dry contact closures.

Common applications for this system would include school or university emergency systems, fire alarm systems, traffic control systems, hospital emergency systems and factory Andon systems.

Trusted Around the Globe





FactoryVision™ LED Displays

The standard-bearer in visual factory management, **FactoryVision™ LED** displays come NEMA 12 standard in single- or double-sided configurations, several pixel pitch options, optional speakers, and the ability to interface with any new or existing plant information system or PLC.



- ✓ Available in single- or double-sided configurations
- ✓ Rated for over 100,000 hours of maintenance-free use
- ✓ Standard NEMA 12 (NEMA 4X available)
- ✓ Interface to plant information systems or PLCs
- ✓ 5-Year Warranty
- ✓ Viewing distance range of 3 ft. to over 500 ft.
- ✓ Second output for audible alarm, music, or speech via optional speakers
- ✓ (up to 8 per system) with remote volume control
- ✓ Optional on-board embedded low power processor, requiring no fan-assisted cooling



Industrial LED Sign Options



FACTORYVISION™ LCD

FactoryVision™ LCD is constructed of rugged construction materials that provide the ultimate defense against weather, discoloration, and impact. A fully-sealed design prevents water, dust, or insects from entering while a light sensor automatically adjusts to optimal brightness for the conditions.



4UPRO

The **4UPro** line is a full color, durable, low-cost industrial Andon display solution ideal for production counts and data display. It features a lightweight cabinet design, is front-access field serviceable, and offers a workable lifespan of over 100,000 hours. Available in standard and custom sizes.



CLOCKS & COUNTERS

LED Industrial Clocks & Counters provide simple communication answers in the workplace to provide a real-time standard or measure for any factory, automation plant, or production facility. Get accurate UP or DOWN counts on cycles, units, packages, time, days, and more.

Manufacturing Efficiency Made Clear

From the auto industry to the food and beverage industry to material handling, **FactoryVision® LED displays** can provide the tools to help you stay competitive in today's manufacturing environment. Just speak to one of our knowledgeable sales representatives for a demonstration of what our **FactoryVision®** line can do for your company.

LEARN MORE AT
factoryvision.com





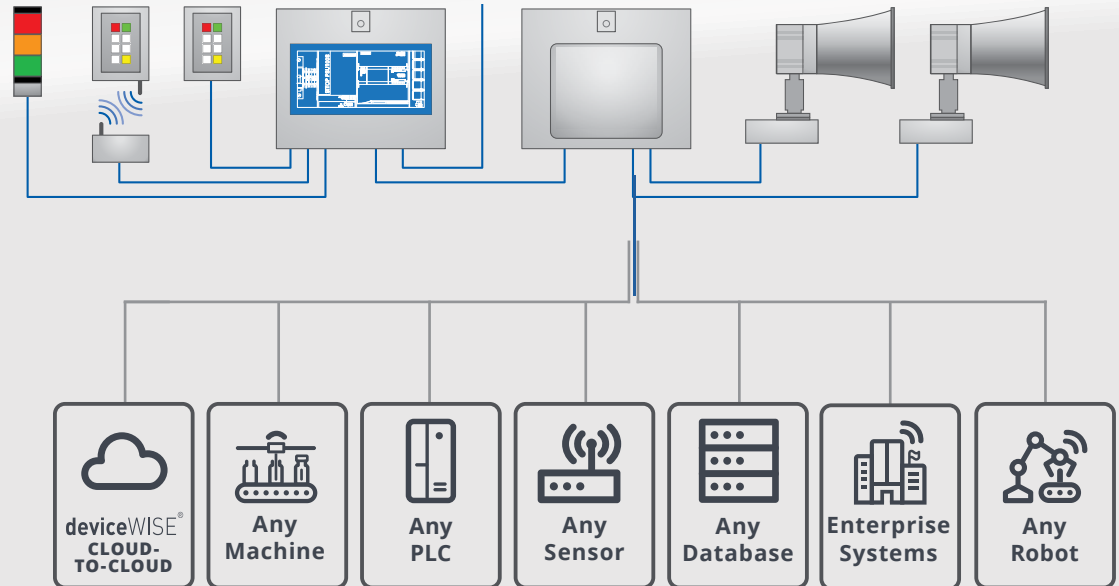
Custom Standalone Andon Systems

In addition to our robust LED and LCD displays, Electro-Matic also offers complete standalone Andon systems as a turnkey solution or as individual components on an as-needed basis.

- ✓ Real-Time Production Data
- ✓ Machine Alerts
- ✓ 8 Preset Alerts
- ✓ Customizable
- ✓ Faster downtime response means rapid ROI based upon high cost per minute of lost production



- ✓ Cable Pull Switches
- ✓ Music Boxes
- ✓ Supervisor/Material Call Pendants
- ✓ Power Disconnects
- ✓ Modified Controller Enclosures
- ✓ Stacklights



Mass Communication

Electro-Matic Visual offers a centralized system that can control an unlimited number of 4U2SEE LED displays via a RS485 connection with pre-programmed message alerts over a simple dry contact system. Multiple alerts or messages are triggered by the dry contact closures.

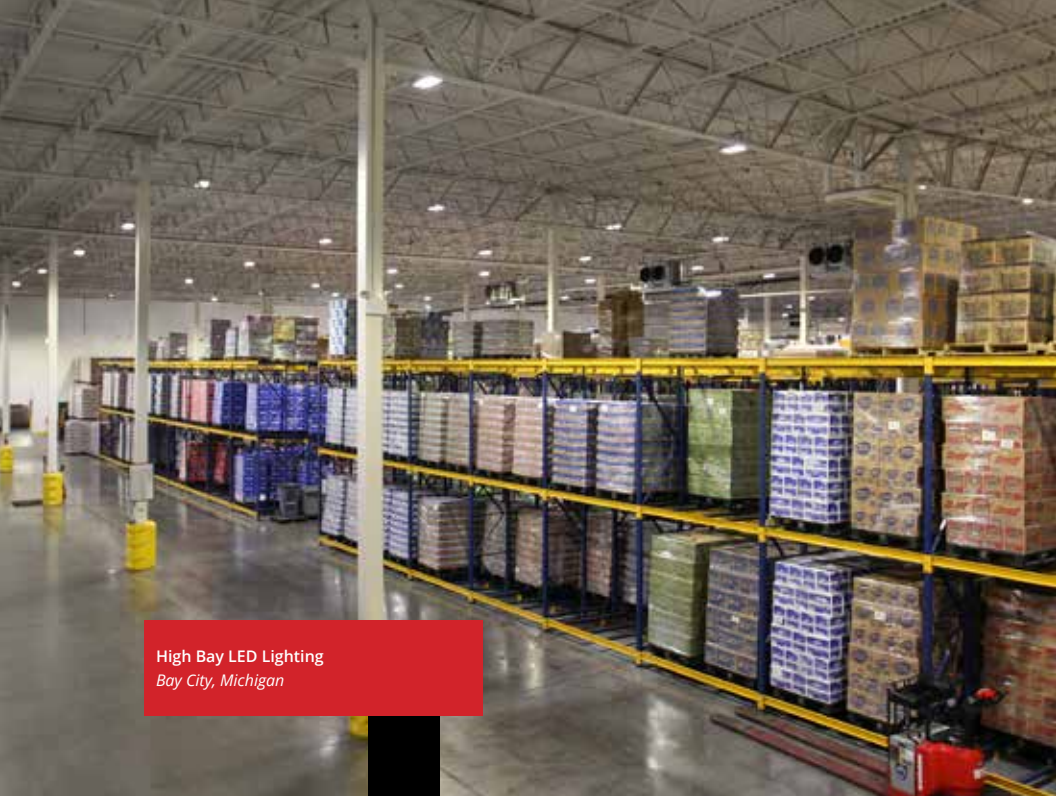
Common applications for this system would include school or university emergency systems, fire alarm systems, traffic control systems, hospital emergency systems and factory Andon systems.

SIEMENS





Wall Pack LED Lighting
Shelby Twp, Michigan



High Bay LED Lighting
Bay City, Michigan



Wall Pack LED Lighting
Shelby Twp, Michigan

More Light. Less Energy.

Our turnkey approach to lighting and energy solutions means we handle every aspect of your new LED lighting installation or retrofit. And we don't stop there. We help you determine the best financing options so you can update your energy systems with no upfront investment, and optimize your energy rebates to maximize ROI.

Products for Every Solution.

Electro-Matic Visual specializes in optimizing our displays for your specific needs. We're a solution provider that caters to all applications. Explore our Solutions hub for inspiration, case studies, and testimonials from our customers.



OUR TURNKEY LED LIGHTING PROCESS

Our team will give you verifiable energy efficiency improvements, cost analysis, rebate optimization, complete project management and installation for your lighting and other energy systems. We'll walk you through the process step-by-step, and find the best solutions for your unique situation.



1

SITE REVIEW

To start your turnkey lighting and energy solutions project, one of our experienced engineers will meet with you at your facility. We provide turnkey energy and lighting solutions for a wide array of facilities, including manufacturing plants, retail spaces, multi-tenant office buildings, schools, churches, private businesses and many more. At this stage, we will get a better understanding of your current lighting arrangement, energy output, configurations, use, costs, needs, and goals.



2

ENERGY AUDIT

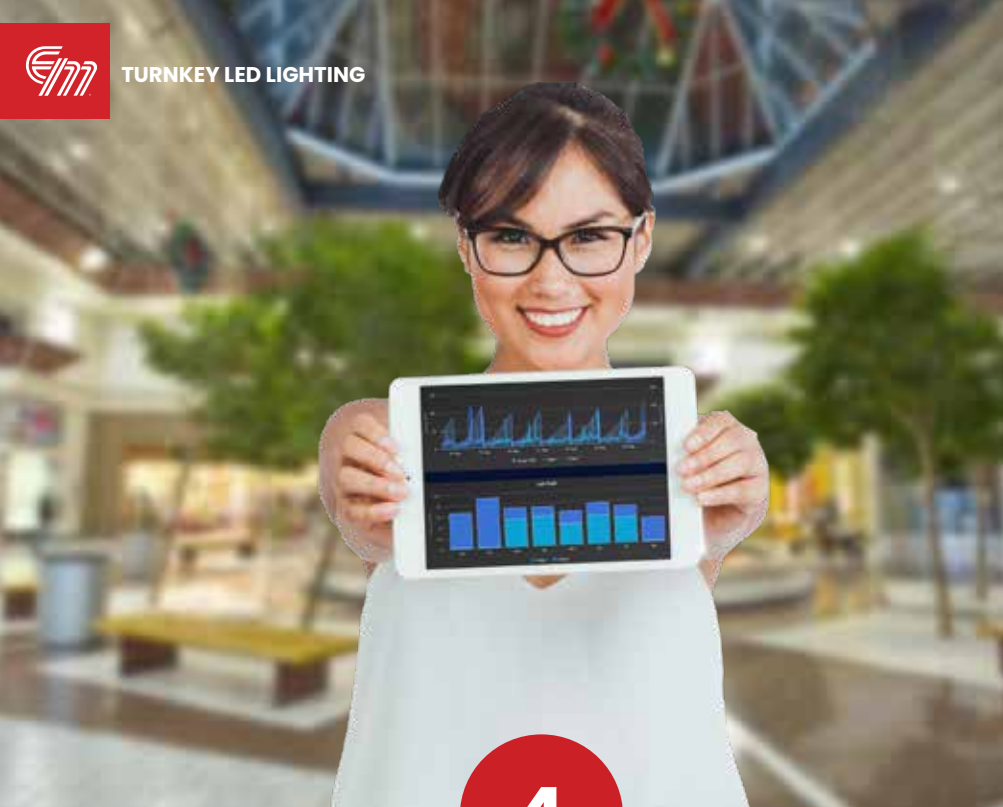
After a site analysis is complete, our experts will perform a complete energy audit, including lighting, water, and other systems as needed. We partner with local and multinational energy solutions suppliers to bring you the most energy-efficient components all together in one place. With the information in the energy audit, you can make the most informed decisions about your system updates or new LED light installations.



3

ROI ANALYSIS

We'll perform an ROI analysis on your project to calculate your payback period, and how much you will save in the short- and long-term. You'll also see how you can finance your energy project using your energy savings and rebates from your utilities. Once you decide which updates are ideal for your facility and you're ready to move forward, we'll obtain competitive installation bids from experienced contractors. We select contractors based on a history of competitive pricing, exemplary service and quality.



4

REBATE OPTIMIZATION

We've worked with utility companies in Michigan and throughout the nation to obtain optimal energy efficiency rebates for our customers. Our engineers work side-by-side with your local utility to perform pre- and post-installation inspections, fill out all necessary paperwork, and answer any questions. You can get the most out of your lighting upgrades and energy improvements without wading through paperwork and tech specs.



5

PROJECT MANAGEMENT

With turnkey project development from planning to implementation, you don't have to interrupt your operations to make vital energy efficient improvements. Working with your timeline and budget, we'll manage your energy project from start to finish. We'll mediate between installers and parts manufacturers to ensure your products are delivered on-time and your LED light installation goes according to plan.



6

INSTALLATION

Proper installation from experienced contractors is the final step in completing your energy project. Our own electricians and experienced partners will take care of installation on a schedule that works best for you. Each installer exhibits a proven history of high-quality service. With your LED light installation complete, you'll start reducing your energy bills right away.



7

SUPPORT

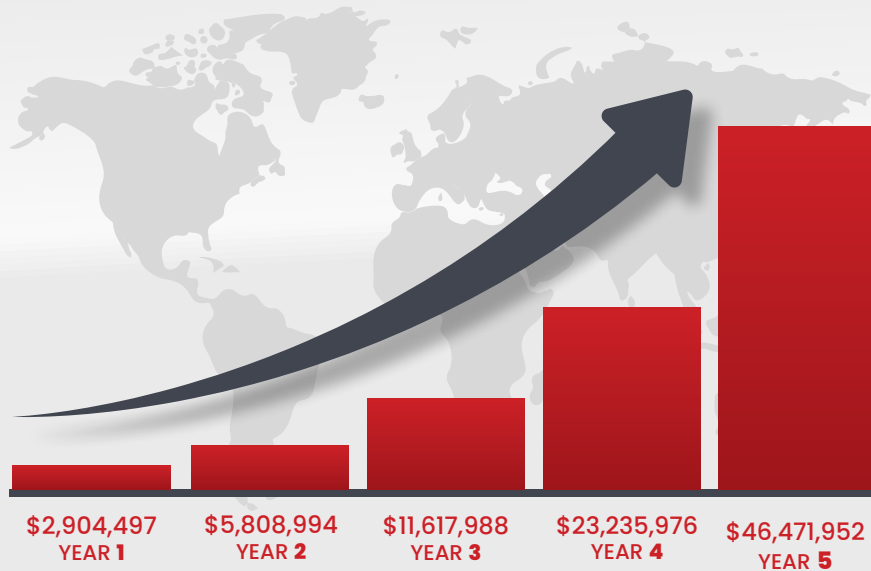
Once your lighting and energy upgrades are installed, we want to make sure you love your new system. If any problems should arise, or if you don't see the energy savings you expected, we're happy to help at any time. We'll help you maintain your energy-efficient lighting and energy system to ensure you enjoy a sustainable, ongoing energy savings.



Parking Lot & Wall Pack LED Lighting
Saginaw, Michigan

Energy Analytics Study

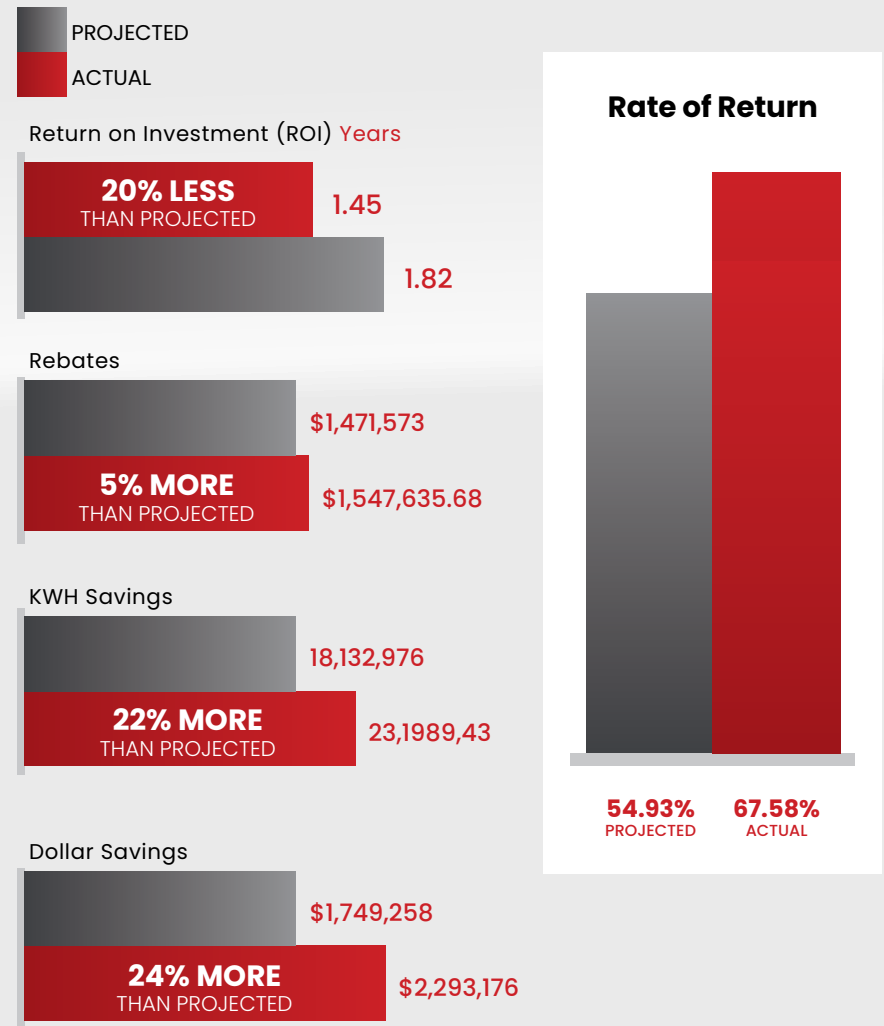
Namdar Realty Group is a privately held, commercial real estate investment firm, owning and managing over 52 million square feet of commercial real estate throughout the United States. Founded in 1999, Namdar started with a single acquisition of a small retail storefront in Long Island, NY.

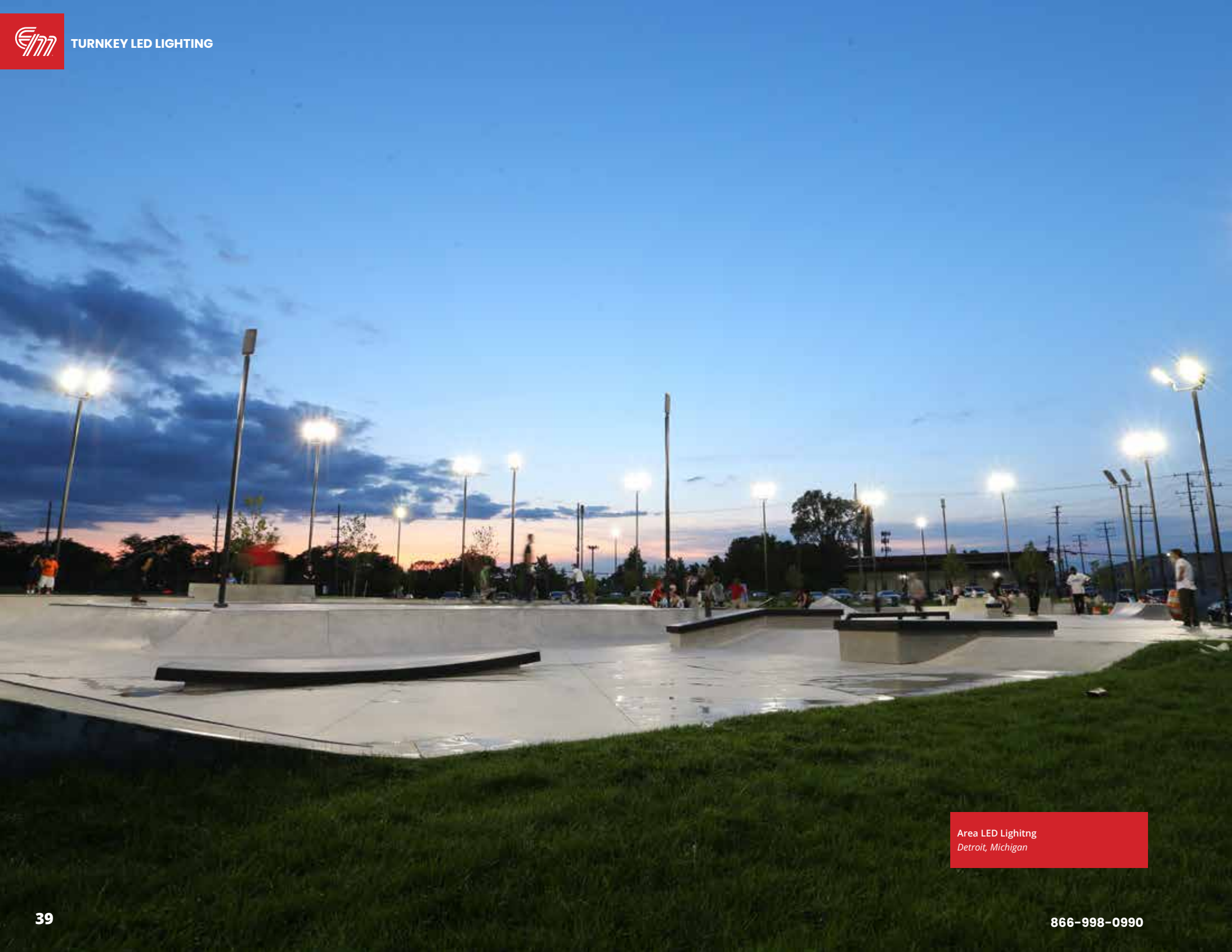


Energy Cost & Maintenance Savings
55 Properties in 13 States

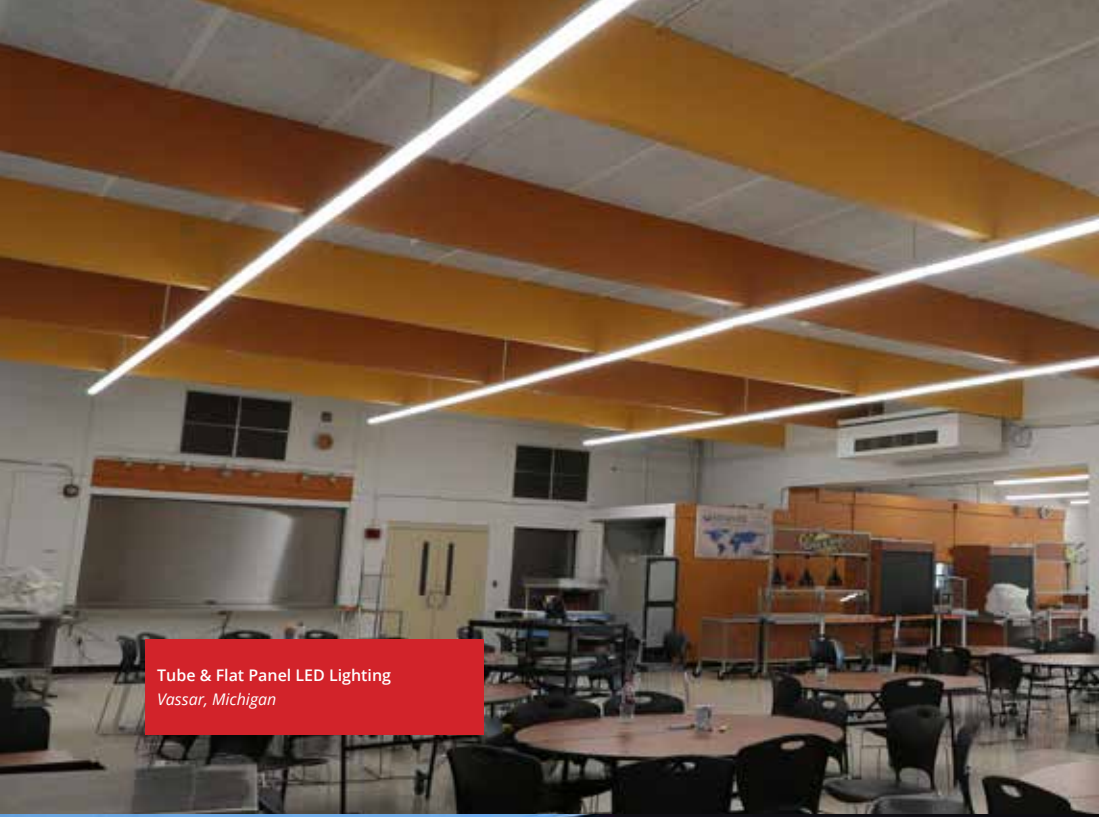
Return on Investment

Energy and maintenance of LED lighting fixtures over conventional commercial and industrial lighting alternatives have significant and measurable long-term benefits not only for the environment but also for your bottom line.





Area LED Lightng
Detroit, Michigan



Tube & Flat Panel LED Lighting
Vassar, Michigan



Parking Lot & Area LED Lighting
Monaca, Pennsylvania



Canopy LED Lighting
Bay City, Michigan



Wall Pack LED Lighting
Detroit, Michigan

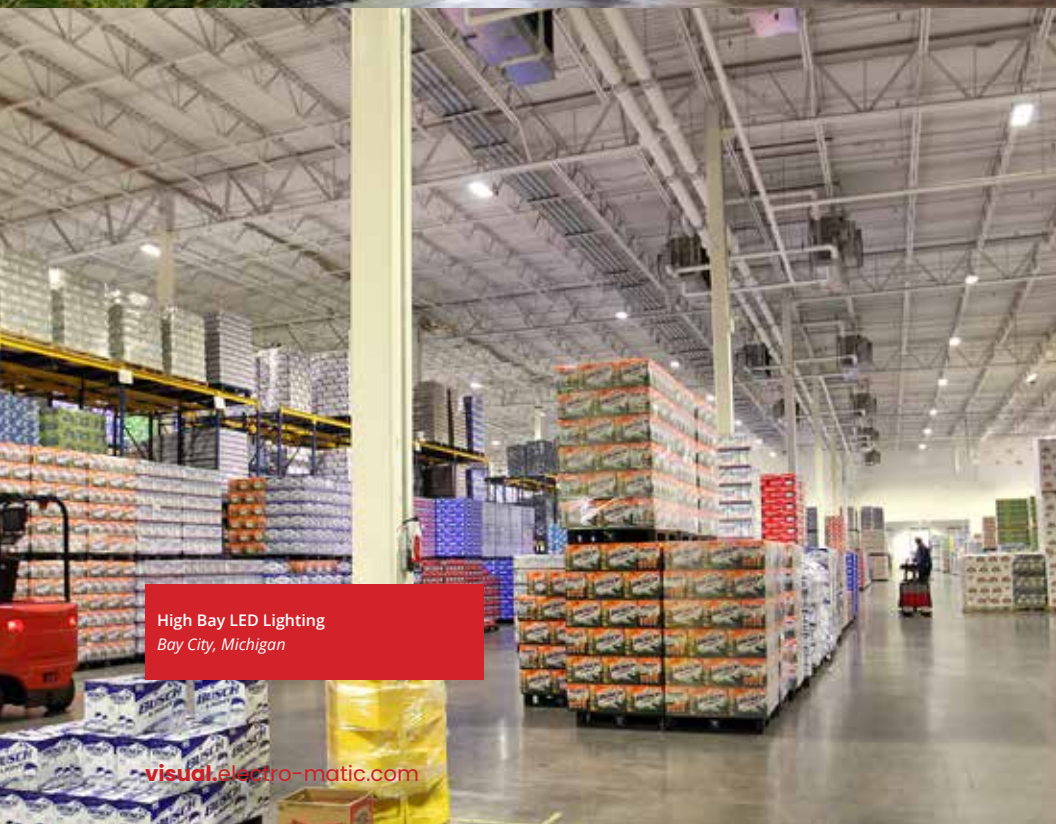
Wall Pack & Interior Flat Panel LED Lighting
Clinton Township, Michigan



Parking Lot & Area Lighting
Saginaw, Michigan



Wall Pack & Accent LED Lighting
Bay City, Michigan



High Bay LED Lighting
Bay City, Michigan

visual.electro-matic.com



Wall Pack LED Lighting
Shelby Township, Michigan



Dillard's
CLEARANCE

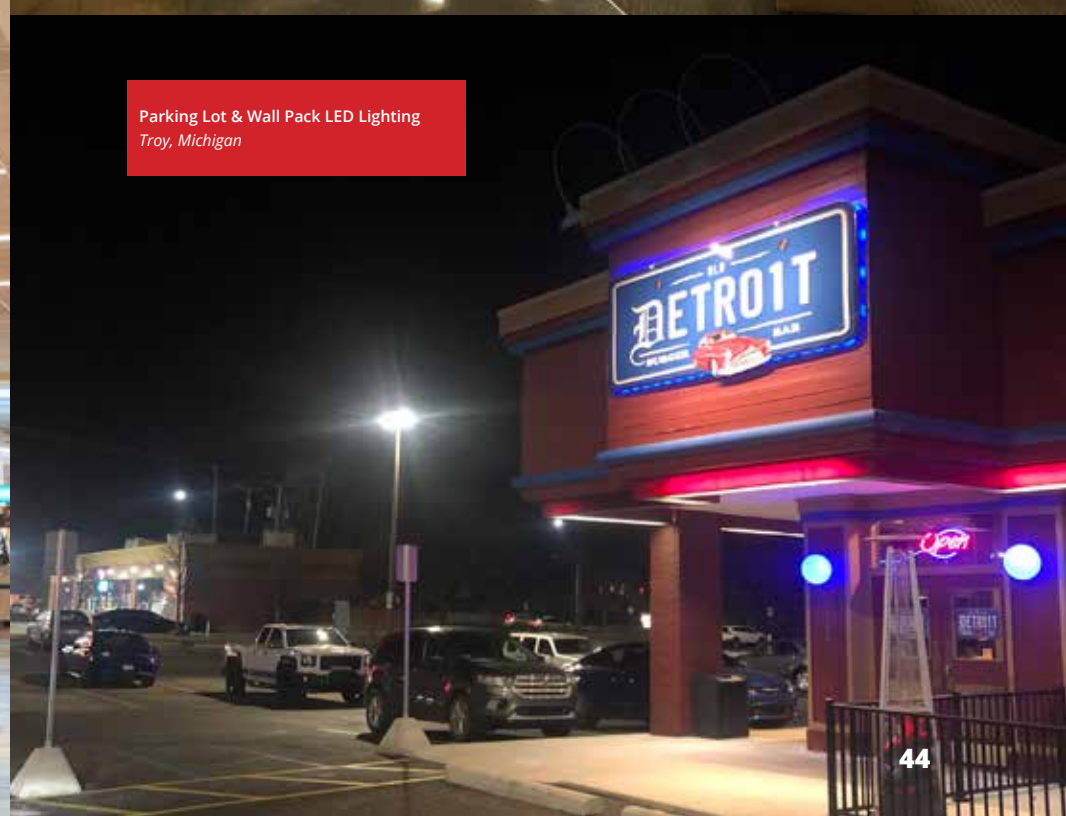
Parking Lot & Area LED Lighting
Colorado Springs, Colorado



Can & Accent LED Lighting
Islandia, New York



Flat Panel / Troffer LED Lighting
State College, Pennsylvania



Parking Lot & Wall Pack LED Lighting
Troy, Michigan



A I A T

High Bay LED Lighting
Cardington, Ohio



High Bay & Accent LED Lighting
Flushing, Michigan



Tube LED Lighting
Vassar, Michigan



Flat Panel LED Lighting
Suffix, New York



Canopy & Wall Pack LED Lighting
Roseville, Michigan



High Bay LED Lighting
Farmington Hills, Michigan



Parking Lot & Wall Pack LED Lighting
Birch Run, Michigan



Parking Lot, Wall Pack & Accent LED Lighting
Saginaw, Michigan



Roadway & Area LED Lighting
Holland, Michigan



Financing & Leasing

At Electro-Matic, we believe innovation only has value when it pays off for the customer. But to gain a return on your LED display or LED lighting investment, you have to be able to afford the right products and services in the first place. If you don't have the budget in place, consider an Electro-Matic leasing option. You can begin taking advantage of the business-building capabilities of dynamic LED display signage and lighting immediately, while using increased revenues to pay for the program — and more!

With lease-to-own options, you pay monthly for the 'use' of the equipment asset (your sign or light fixtures), while deferring the reduced cost of 'ownership' until the end of the lease term. Like most forms of financing, the main advantage is that you avoid tying up cash in assets. This cash could be directed toward replacing aging sign structures, or put to work elsewhere in your company or organization.

Advantages

- ✓ Monthly lease payments are lower because you are only paying for the use of the asset
- ✓ Up to 100% financing, with minimal deposit and application fees
- ✓ Install, training, and maintenance costs can be financed along with the cost of the sign
- ✓ Lease payments can be expensed and may reduce tax liability
- ✓ Leasing does not impact existing credit lines
- ✓ Fixed rate leases hedge against inflation by locking in the value of an LED display solution for many years at today's value of money
- ✓ Lease terms are flexible and can be matched to useful equipment life or customized to seasonal cash flow

Leasing has many advantages, not the least of which is to help you begin reaching your business goals with your LED display or lighting right away!

Sales, Support & Service

We take pride in each milestone we've passed during our history. Even more important to us, however, are the people who bring years of tenure to their positions. Our staff demonstrates dedication to exceptional quality and customer service every day. From our corporate offices in Farmington Hills, Michigan, we offer several methods to support you, including:

Support & Service

- ✓ 24/7 Phone Technical Support
- ✓ Online Live Chat
- ✓ Online Support Sessions
- ✓ Online Training Videos
- ✓ On-Site Technical Support
- ✓ Factory Training
- ✓ Phone Training
- ✓ Webinar Training
- ✓ Repair and Return Program



866-998-0990

Contact Us



Call

866-998-0990



Click

visual.electro-matic.com



Visit

Electro-Matic Visual

23660 Industrial Park Drive
Farmington Hills, MI 48335

visual.electro-matic.com



Turning innovation into value.™



visual.electro-matic.com

866-998-0990